
Collaboration with Creators from the Global Stage Sumitomo Pavilion “UNKNOWN FOREST, Performing Theater” Information Debut!



The Sumitomo Pavilion, as a participant of EXPO2025 Kansai, Osaka, is happy to announce the creative staff of the “UNKNOWN FOREST, Performing Theater”, a theater of unprecedented scale where music and people perform as one with a multi-layered screen measuring 20 meters wide x 7.5 meters in height.

This theater is a special space that brings visitors the unforgettable finale of the “UNKNOWN FOREST”, an adventure through a unique forest with lantern in hand.

Collaboration with Global Creators

Creators of the global stage will lend their extraordinary artistry and talent to create a one-of-a-kind theater experience in the production of the “UNKNOWN FOREST, Performing Theater.”

●Choreographer/staging

Kenta Kojiri (SandD Inc.)

Dancer/Choreographer. Kenta moved to Europe after winning the Prix de Lausanne. A member of the Nederlands Dans Theater, he has performed in titles created by outstanding choreographers such as Jiri Kylian. 2017, founded “SandD” in creative pursuit of performing arts that transcends genre and generations. Associate choreographer at the Yokohama Red Brick Warehouse No. 1 since 2024.
URL : <https://kojiri.jp/>



●Costume Designer

Tamae Hirokawa (SOMA DESIGN)

Creative Director/Designer. Founded brand, “SOMARTA” in 2006. Her signature item, seamless knitwear “Skin series” is a part of the MoMA collection and her work is celebrated in the international community in the areas of apparel, design, and art.

URL : https://x.com/soma_design



●Music Director

Isao Yamazaki (PINTON Co., Ltd.)

From TV commercials, events, and footage for corporate branding, Isao is a composer/music director whose talents span a wide spectrum down to sound production of acoustic space in the Japan Pavilion at EXPO Dubai. At Osaka EXPO’s Sumitomo Pavilion, he will provide comprehensive direction of all things acoustic from the moving logo, the forest area, and the performing theater.

URL : <https://www.pin-ton.jp/>



●Production

Contents Director | Masao Ochiai (MONTAGE Inc.)

Contents Producer | Shungo Ota (MONTAGE Inc.)

Creative Production behind countless spaces and experiences starting from video production. The duo continues to create new experiences in Japan and abroad by integrating their extensive insights regarding video, lighting, sound, physical effects, and architecture. Winner of the “Gold Award” in the Exhibition Design Category for the Japan Pavilion at Expo 2020 Dubai.

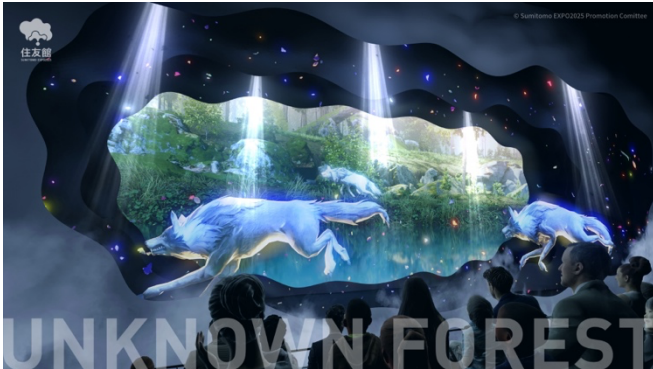
URL : <https://montage.co.jp/en/>



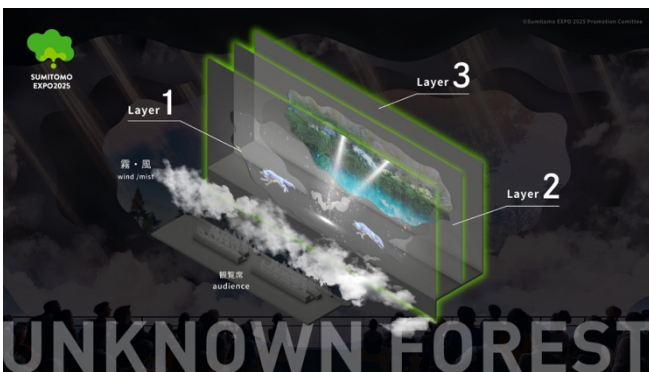
UNKNOWN FOREST Performing Theater Overview

●UNKNOWN FOREST “Performing Theater”

After journeying through the forest, visitors will be greeted by the “Performing Theater” that is 20 meters in width and 7.5 meters in height. The wind and mist floating in the space will speak to the visitors’ emotions and the multi-layered screen, together with music and performers, will lead to the breathtaking finale of the UNKNOWN FOREST.



●Distinctive stage equipment



The stage is comprised of three layers. The back is a giant LED vision. This stage equipment that delivers a stunning showcase of the performers’ movements was created by an art team with extensive experience in musicals. The projector will bring three dimensional images to life on the mesh screen in front of the audience’s eyes. The UNKNOWN FOREST will reach a climax through a

symphony of imagery, music, and people’s movement.

【Provision of Assets】

◆Today’s assets related to the “Sumitomo Pavilion” are available for download from the following URL.

<https://bit.ly/4kAtUIO>



※Please make sure to credit © Sumitomo EXPO2025 Promotion Committee when using photo