
Toward a future starting from the forest Expo 2025 Osaka, Kansai Sumitomo Group Pavilion “Sumitomo Pavilion” Façade Completion Press Preview

To celebrate the completion of the “Sumitomo Pavilion” built on Yumeshima, Osaka, the site of the Expo 2025 Osaka, Kansai, Japan, the Sumitomo Group will be hosting a press preview to debut the pavilion’s façade on January 23 (Thurs) 2025.



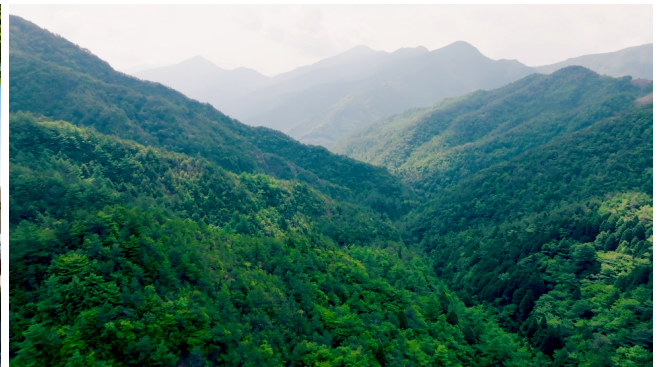
Additionally, special collaborations in developing contents with creators/artists and corporations in Japan and abroad have been underway and “attendant uniforms (YOHEI OHNO)” and “original leaf cutout art (Lito@LeafArt)” to be featured in the pavilion exhibition will also be debuted.

Sumitomo Pavilion: Façade

The Sumitomo Pavilion, made from approximately 1,000 trees planted by our predecessors in the Sumitomo Group's "Sumitomo Forest", based on a wish to "make use of each tree and valuing each life, one tree at a time", is a space offering the warmth and tranquility of wood.

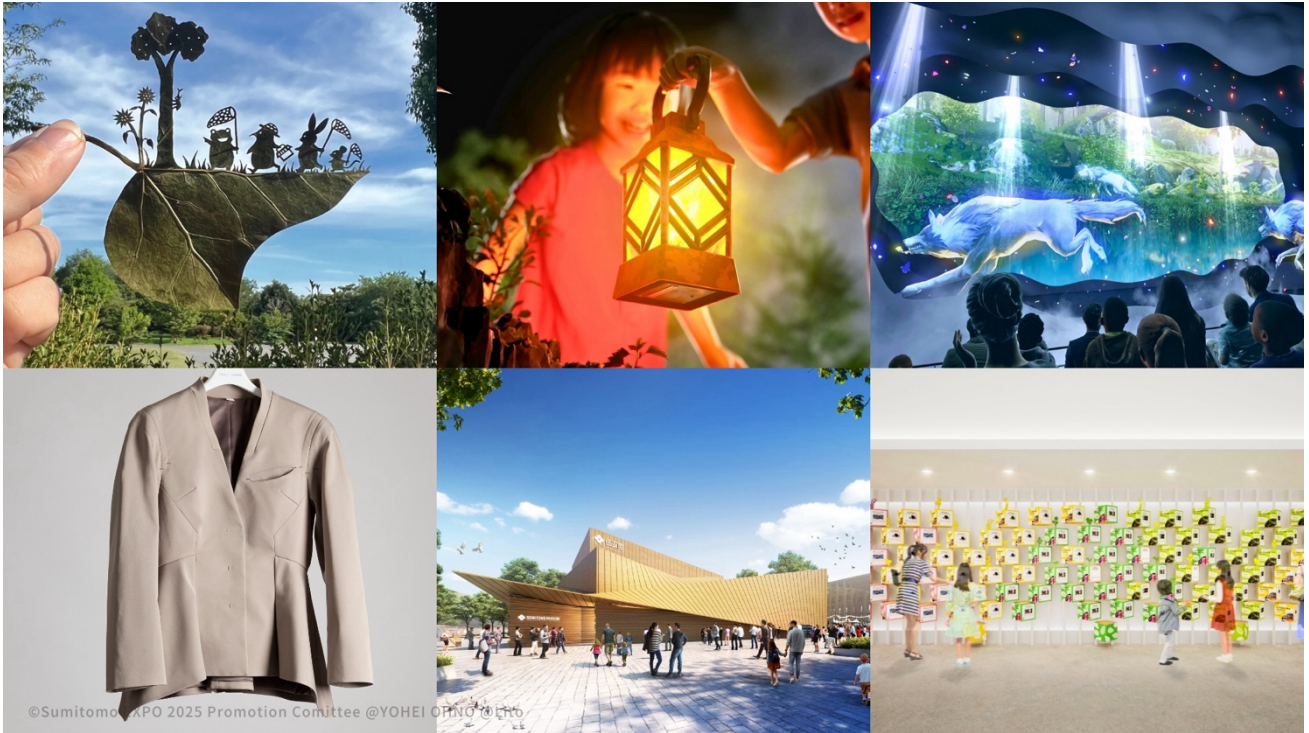


Inspired by the "peaks of the Besshi Mountains" in Shikoku, the foundation of Sumitomo's growth, the roof and façade of the pavilion is made from plywood made from "Japanese cypress from the Sumitomo Forest" and designed like the silhouette of its rolling mountain peaks. The exterior near the pavilion's entrance features "cedar from the Sumitomo Forest" which were planted in 1970, the year of the Osaka Expo. The wood is installed in layers to express "tree rings and geological layers."



Collaborations

The Sumitomo Pavilion promotes collaborations with creators/artists and corporations in Japan and abroad to jointly develop uniforms, exhibition contents, and official merchandise.



【Designer YOHEI OHNO】



The Sumitomo Pavilion attendant uniforms will be debuted at the pavilion on the preview day. The uniforms of the attendants who will welcome and guide the many guests from home and abroad to the Sumitomo Pavilion throughout the event term has been created through a collaboration with Yohei Ohno, designer of the “YOHEI OHNO” brand, built on the concept of “unique form and practicality”,

inspired by art, architecture, sculptures, and products from past to present, and characterized by its unique and free-spirited ideas and forms.

The Sumitomo Pavilion attendant uniforms, the first uniform design for Ohno, features signature YOHEI OHNO design fused with functionality to facilitate staff operations. Additionally, the uniforms are made from “bottlium®”, special long fiber pellets of the highest quality, made by recycling PET bottles collected from nationwide retailers of the Sumitomo Corporation group companies as well as “COMFORMER®”, a heat storage polymer developed by Sumitomo Chemicals that absorbs and releases heat and contributes to boosting the comfort of people’s daily lives while also reducing energy usage.

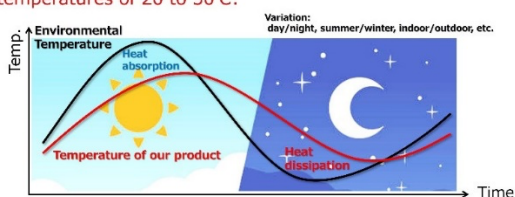
■bottlium® | <https://bottlium.tomra.co.jp/>



■Comformer® | https://www.sumitomo-chem.co.jp/func_polymer/product/heatorage/

Effect image

- Controls exothermic and endothermic behavior at specific temperatures of 20 to 50°C.



<Profile>

■Yohei Ohno

Designer of “YOHEI OHNO”. After graduating from Bunka Fashion College, gained a scholarship to study at Nottingham Trent University in the UK. Founded his own brand, “YOHEI OHNO” in 2014 after returning to Japan. Based on the concept of “unique form and practicality”, Ohno pursues new images of people and lifestyle toward the future through unique approaches that is not restricted by tradition and inspired by art, architecture, sculptures, and products of past and present.



OFFICIAL SITE: <http://yoheiohno.com/>

INSTAGRAM: [@yohei_ohno](https://www.instagram.com/yohei_ohno)

【Lito@LeafArt】



“Leaf cutout artist”, Lito, creates delicate art from leaves. A self-taught artist, he started creating in 2020 and the leaf art that he posts almost every day on social media soon captured the hearts of the world.

Lito cuts a single leaf with a knife to create a sweet world of animals. Staff who upon discovering Lito’s works portraying the various animals that live in the forest felt that it was the “perfect match for the Sumitomo Pavilion with its

concept of the forest, nature, and life”, reached out to the artist and the result is this collaboration.

In this collaboration, Lito will create/exhibit “leaf art created exclusively for the Sumitomo Pavilion.” There will also be an experience featuring Lito’s works within the pavilion exhibition, “UNKNOWN FOREST.”

■ Original leaf art for the Sumitomo Pavilion

Leaf art featuring animals that co-exist in the “forest”, the Sumitomo Pavilion’s theme. Four new pieces will be on display.

Message from Lito: “Please let your imagination soar and make your own story as you look at the leaf art.”

※The original pieces will be debuted at the Sumitomo Pavilion at the preview event.



■ Image of the Lito@Leaf Art collaboration experience

As a part of the UNKNOWN FOREST experience at the Sumitomo Pavilion.



<Profile>

■ **Lito@LeafArt**

Leaf cutout artist. Born 1986. From Kanagawa.

Lito is a self-taught artist who started creating his art in 2020 by applying his ADHD as well as his extreme concentration and attention to detail for a positive purpose. His leaf cutouts posted almost every day on social media soon captured the hearts of the world. In addition to being featured on TV programs such as “Jonetsu Tairiku” (TBS), “Testsukono Heya” (TV Asahi), and “Asa Ichi” (NHK), Lito has been featured on a large variety of newspapers and other media. He has also been featured with wonderment by overseas media. His collection of works, “Itsudemo Kimi no Soba ni iru”, “Happa Kirie Ehon, Sutekina Sora ga Mieruyo, Ashita mo Kitto”, “Happa Kirie Ikimono Zukan”, and picture book, “Manekko Chameleon” (all from Kodansha) have been welcomed with rave reviews. Lito’s works can be seen at exhibitions nationwide or at the “LITO LEAF ART MUSEUM FUKUSHIMA”, a private museum that opened in 2024.



<https://lito-leafart.com/>

【Provision of Assets】

◆ Today’s assets related to the “Sumitomo Pavilion” are available for download from the following URL.

<https://bit.ly/3WoMc57>



※ Please make sure to credit © Sumitomo EXPO2025 Promotion Committee, ©YOHEI OHNO, ©Lito when using the photos.

- YOHEI OHNO : ©YOHEI OHNO
- Lito@LeafArt : ©Lito